



Kingswood
Computing
"Farm Recording Made Easy"

NEW!

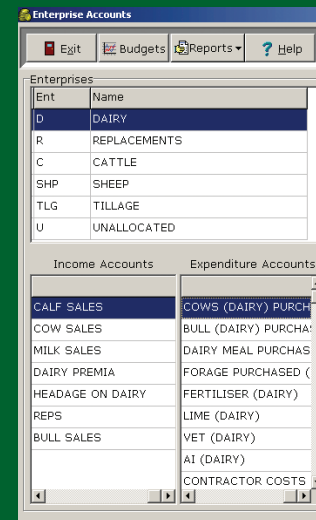
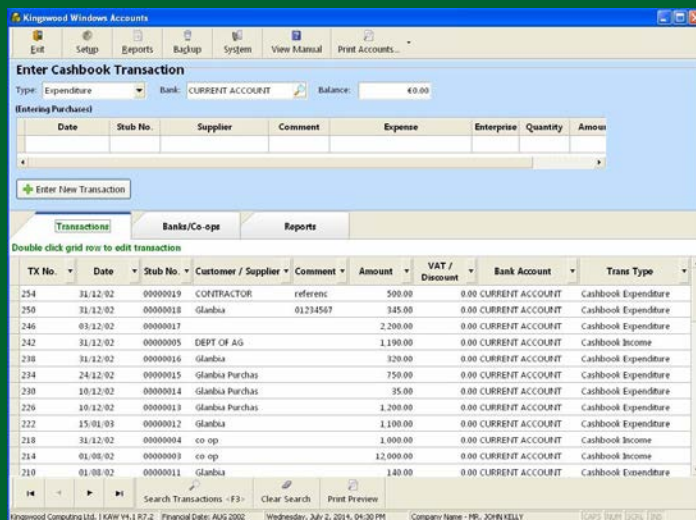
Bank Link - reads in bank statements
Accounts Link - sends end year data to accountant

Kingswood Accounts - The ultimate cost control tool for your farm

Take an hour a month to stay on top of your farm finances.

In these times of rising input costs and volatile output prices, tight financial control is more important than ever. Kingswood Accounts works for you in conjunction with your accountant and Teagasc adviser. It also links in with your herd records on Kingswood Herd.

- Easy to use input from cheque stubs & receipts
- Pre-set Account Headings compatible with Teagasc Profit Monitor.
- Co-op Statement Download
- Separate Enterprise Margins, in addition to Farm Total Profit.
- Supplier/Customer set-up.
- Farm Budget calculations.
- Bank Statement Download



Financial information for you and your accountant

The ultimate cost control tool for your farm

- Easy to use Income/Expenditure Input.
- Extensive Range of Reports.
- Integrates with Kingswood Herd.
- Bank Statement Download
- Co-op Statement Download.
- Link to Teagasc Profit Monitor.

Additional Kingswood Accounts Options

- Purchase/Sales Ledgers.
- Vat Analysis.
- Contractor Version – Invoicing, Statements, Job Cards, etc.

Kingswood Accounts gives you easy access to a comprehensive set of cost management and financial reports

- Enterprise Margins, Cashflow Budgets, Cost per ha/litre/kg solids/lu
- Fully compliant Teagasc Profit Monitor reports
- Accountants Reports eg Trial Balance/ Nominal Ledger Audit Trail
- Full set of Financial Reports inc. Profit & Loss/Balance Sheet



Reports Menu

Enterprise Summary - This year Versus Last 3 Years

25/12/09 Page 1
Kingswood Accounts V3.0 R4.6

Enterprise	This-Year-2009	2008	2007	2006
Enterprise Income				
D Dairy	427946.80	401282.61	358722.81	315141.80
R Replacements	6194.62	0.00	5163.53	4978.40
C Cattle	56486.79	49798.38	89132.27	52034.62
T Tillage	45383.91	40785.31	13375.31	23156.42
U Unallocated	171383.33	158616.51	134246.01	117685.31
Total Enterprise Income	707395.54	650482.81	600640.53	512896.93
Enterprise Expenditure				
D Dairy	187713.80	158810.86	112767.48	101029.92
R Replacements	2132.92	0.00	1022.70	13694.62
C Cattle	33336.58	24453.80	25950.27	25769.56
T Tillage	41458.48	32530.23	38807.02	23895.05
U Unallocated	7913.12	6491.07	3664.44	2571.53
Total Enterprise Expenditure	272554.99	214204.96	182211.97	167060.68

Sample Report



Farm Finances Made Easy

Kingswood Computing, Dublin Chamber Centre, Whitestown Road, Tallaght, Dublin 24.
Tel: 1850 923 396 Fax: 459 0395 Web: www.kingswood.ie Email: info@kingswood.ie